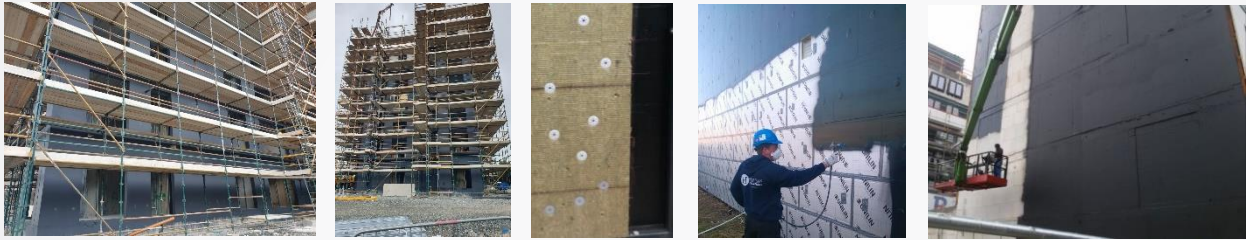




**Airtight and vapour breathable, liquid applied membrane to be installed before facade finish. Certified Fireclass B, S1, D0 (EN13501)**



#### PRODUCT DESCRIPTION

ISOPROOF FR is a ready-to-use coating based on specific pure acrylate polymer dispersions, which is applied with an airless spray device, paint roller or paintbrush and dries to a durable, flexible, watertight, rainproof, weatherproof, UV resistant, airtight and vapour open membrane, certified fireclass B (EN 13501).

Suitable substrates:

- Concrete blocks, clay bricks, calcium silicate stone
- Fibre cement boards, MGO, plaster boards
- Insulation panels: EPS, XPS, Kingspan, Extratherm, Rockwool
- OSB, plywood, woodfibre

#### APPLICATION METHOD

##### Preparation of the surface

- » Remove dust, loose parts and surface pollutions. ISOPROOF FR is applied on a closed surface: fill holes and joints with a suitable cement based product.
- » Apply PRIMER 46FR on the following types of substrates:
  - Porous and mineral based substrates and fibre cement boards
  - To improve adhesion on dusty substrates
  - Low strength substrates such as calcium silicate stone
  - (Water sensitive) plasters
  - And when applying ISOPROOF FR in hot conditions.
- » Use PRIMER 52 before applying ISOPROOF FR on metal or aluminium parts and on mastics.
- » when applying ISOPROOF FR over joints of different materials or insulation boards : use HEVATEX T10-30 textile over the joints, in between 2 layers of ISOPROOF FR.

##### Application method:

- » Mix ISOPROOF FR; do not add water or solvents.
- » Minimum requirements during application and at least 24 hours after application:
  - T: > 5°C , also of the substrate
  - Do not apply in full sunlight
  - Do not apply during rain.
- » Apply ISOPROOF FR with an airless paint spray device, paint roller or paintbrush, in two layers. Apply the second layer, after the first layer has dried.
- » The drying time of ISOPROOF FR is weather dependant and varies between 4 and 12h in normal conditions.
- » Clean tools with water.

##### Finishes:

- » Insulation boards can be fixed directly onto ISOPROOF FR using glue or mechanical anchors.
- » Façade panels, Brick, Block, Cement Boards, Aluminum, PVC, Plaster, Behind Glass

## CHARACTERISTICS

- » Form: liquid.
- » Colour: black/grey/white (other colours on demand)
- » Total indicative consumption/m<sup>2</sup>: 0,7 kg/m<sup>2</sup>
- » Density (kg/l): 1,2-1,3.
- » pH: 9,0-10,0.
- » Solids (%): >50%.
- » Temperature resistance after drying: -20°C to +70°C.

TEST	NORM	VALUE (independent test reports)
Impermeability to water	NBN EN 16302 (2013)	Pass
Vapour permeability (μ)	EN ISO 12572	μ-value: 2486 <b>0,5kg/m<sup>2</sup></b> - Sd: 0,46 - dry: 0,2mm(200 micron) <b>0,7kg/m<sup>2</sup></b> - Sd: 0,65 - dry: 0,28mm(280 micron)
CO2 permeability	EN 1062-6	Sd > 75 meter (class C1) Pass according EN1504-2
Airtightness		0,03 m <sup>3</sup> /m <sup>2</sup> .h
Airtightness system with rockwool® panels anchored on/through Isoproof FR membrane on blockwall	EN 12114	0,03 m <sup>3</sup> /m <sup>2</sup> .h
Crack bridging	EN 1062-7	23°C – Pass – Class A3 -10°C – Pass – Class A4 Pass according EN1504-2
Adhesion on mineral surfaces such as concrete brick. (with use of PRIMER 46FR as bonding)	NBN EN ISO 4624 (2016)	> 1 N/mm <sup>2</sup> ; Pass.
Adhesion of ISOPROOF FR on fibre cement boards. (with PRIMER 46FR as bonding)	NBN EN ISO 4624 (2016)	> 1 N/mm <sup>2</sup> ; Pass.
Adhesion of ISOPROOF FR on OSB wood. (with use of PRIMER 46FR as bonding)	NBN EN ISO 4624 (2016)	> 1 N/mm <sup>2</sup> ; Pass.
Adhesion of ISOPROOF FR on insulation boards type Recticel.	NBN EN ISO 4624 (2016)	Pass.
Elongation after ageing	NBN EN ISO 12311-1 (1999)	>40%
UV- and weather resistance	EN ISO 16474-3:2013	pass
Resistance to fire class	EN13501	B, s1, D0

## PACKAGING

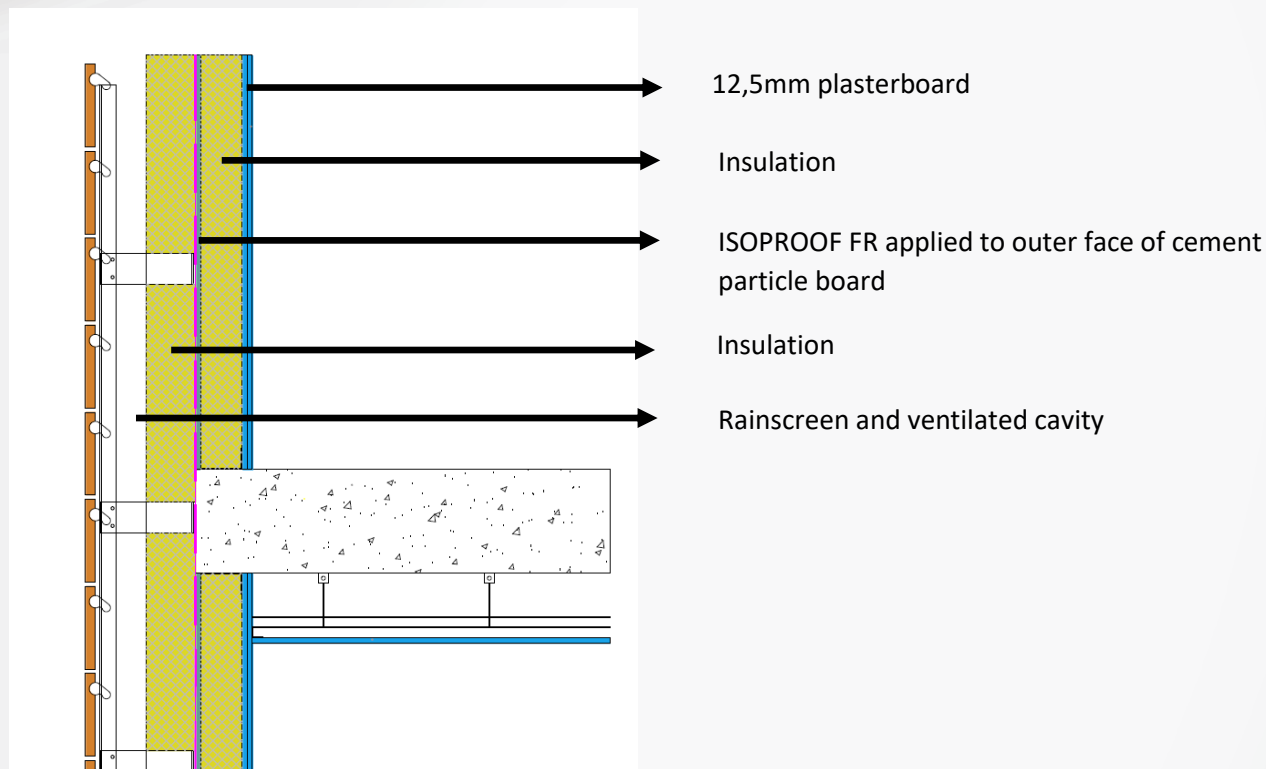
Pails - 10 kg. (Pallet: 44 x 10 kg)

## STORAGE

5 – 20 °C; stored dry, out of direct sunlight; conservation: 12 months from date of production, original unopened packaging.

## SAFETY

Consult the safety data sheet prior to application. Requested to wear eye protection, mouth mask, gloves and safety wear during spray application.

**TYPICAL DESIGN DETAIL(\*):**

*(\*) Kindly contact us for other available design details. Subject to interstitial condensation risk analysis according to IS EN ISO 13788 or IS EN ISO 15026 whichever is applicable.*

DATE OF THIS EDITION: 28/08/2021

Our general conditions of sale apply. This document does not have a contractual value. This technical data sheet replaces and annuls the previous edition. The information given in this sheet has the purpose to inform and advice you. At every moment, this sheet can be adapted because of technical evolution. All information is given in good faith and without any warranty. The application, use and processing of these products are beyond our control and therefore the entire responsibility of the user/client/applicator. The user of the product must test the product's suitability and apply for the intended purpose. Established liability if any for any reason is always limited to the value of the goods supplied by HEVADEX bvba. The products and systems are manufactured under total quality management. HEVADEX bvba reserves the right to change the properties of its products. Users must always refer to the most recent issue of the local Product Data Sheet, copies of which will be supplied on request.